

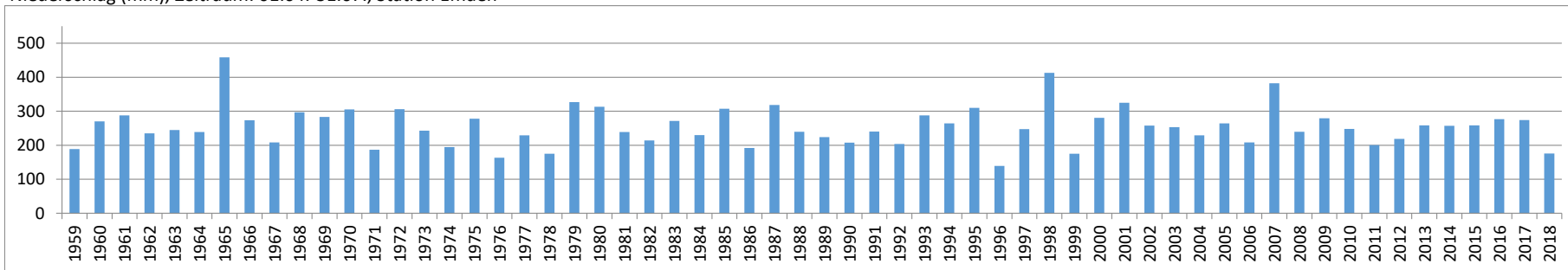


Deutscher Wetterdienst
Niederschlag (mm)
Zeitraum: 01.04.-31.07.

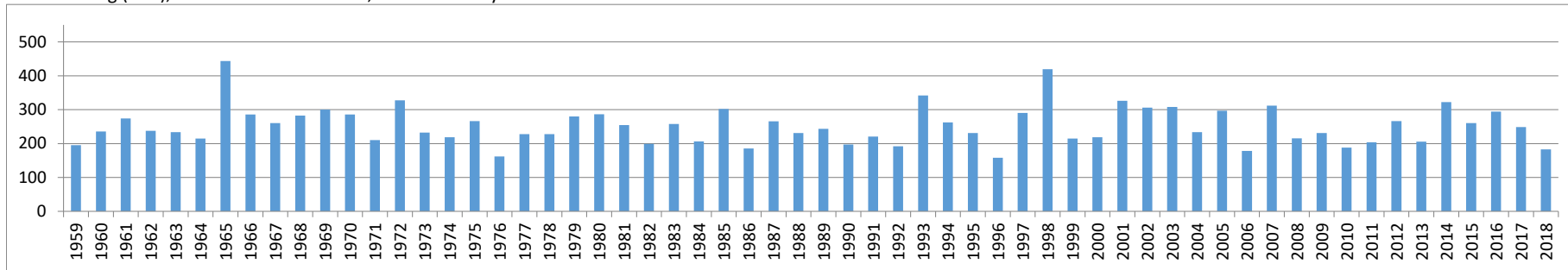
Jahr	Emden	Friesoythe	Diepholz	Lingen	Osnabrück	Bremerhaven	Bremervörde	Rotenburg	Bremen	Nienburg
2018	175	183	92	152	147	161	152	138	132	142
<i>langjähriger Mittelwert (1961-2017)</i>	257	255	238	265	272	254	256	264	245	244

Jahr	Soltau	Hannover	Boizenburg	Schwerin	Lüchow	Gardelegen	Braunschweig	Seesen	Göttingen
2018	157	136	95	112	70	105	118	148	103
<i>langjähriger Mittelwert (1961-2017)</i>	267	234	239	230	216	212	234	303	247

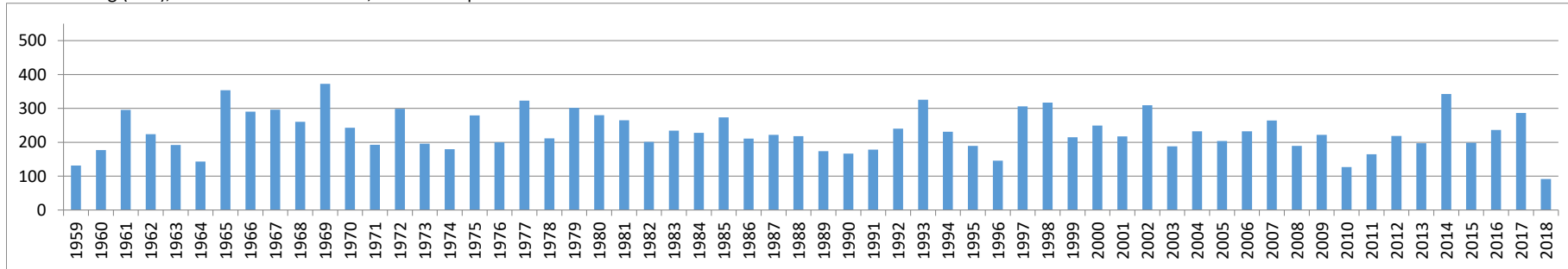
Niederschlag (mm), Zeitraum: 01.04.-31.07., Station Emden



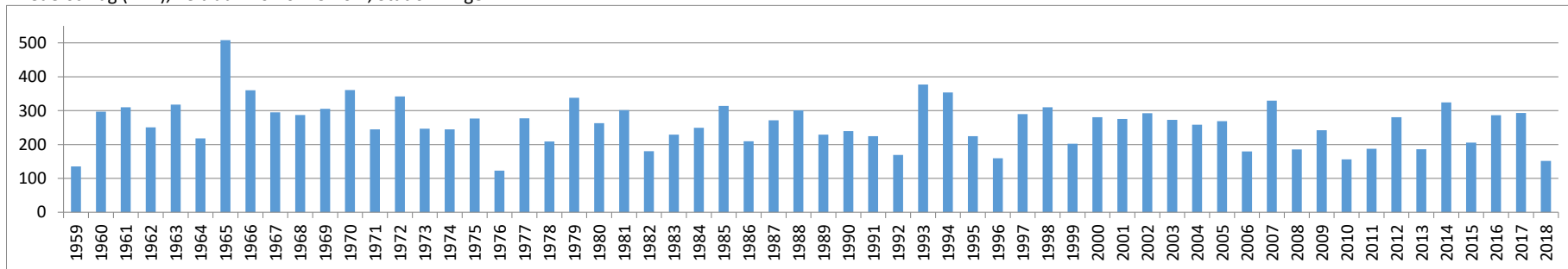
Niederschlag (mm), Zeitraum: 01.04.-31.07., Station Friesoythe



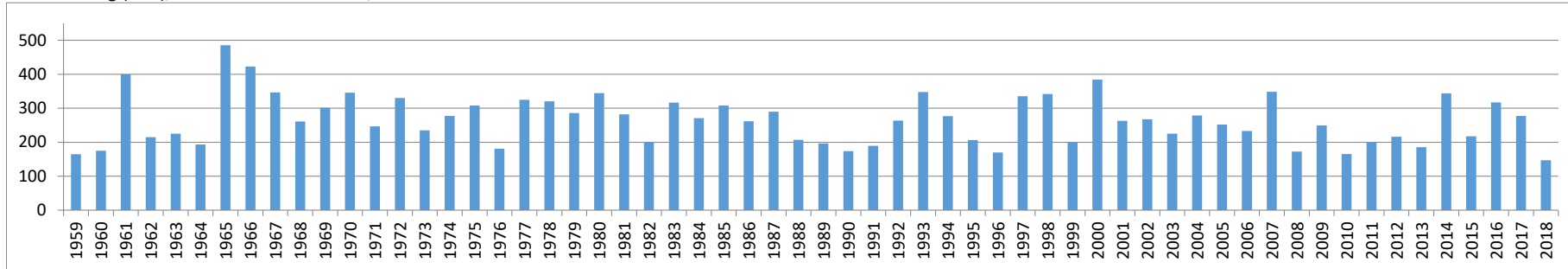
Niederschlag (mm), Zeitraum: 01.04.-31.07., Station Diepholz



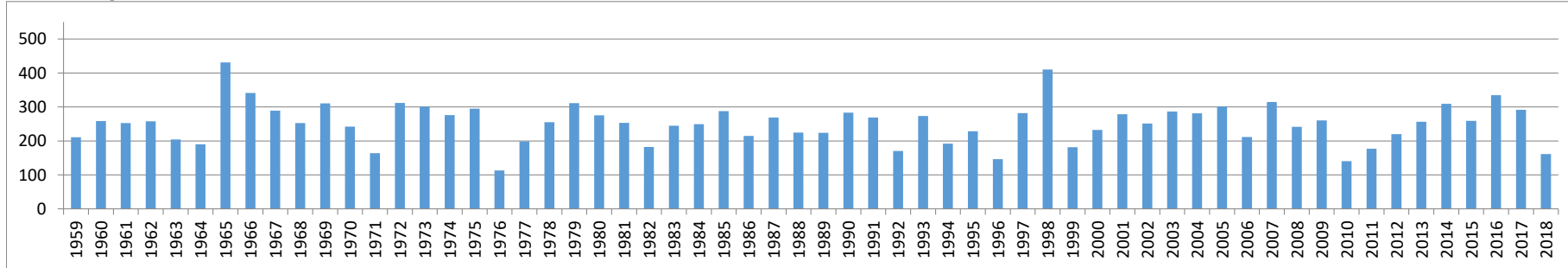
Niederschlag (mm), Zeitraum: 01.04.-31.07., Station Lingen



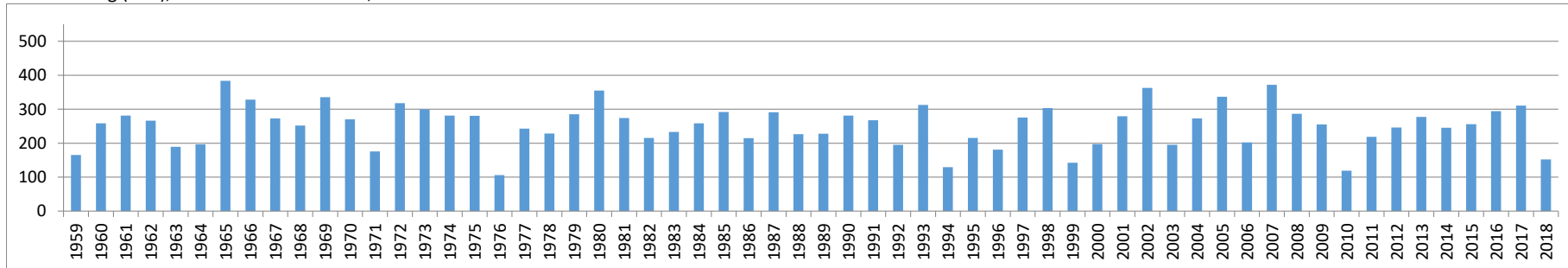
Niederschlag (mm), Zeitraum: 01.04.-31.07., Station Osnabrück



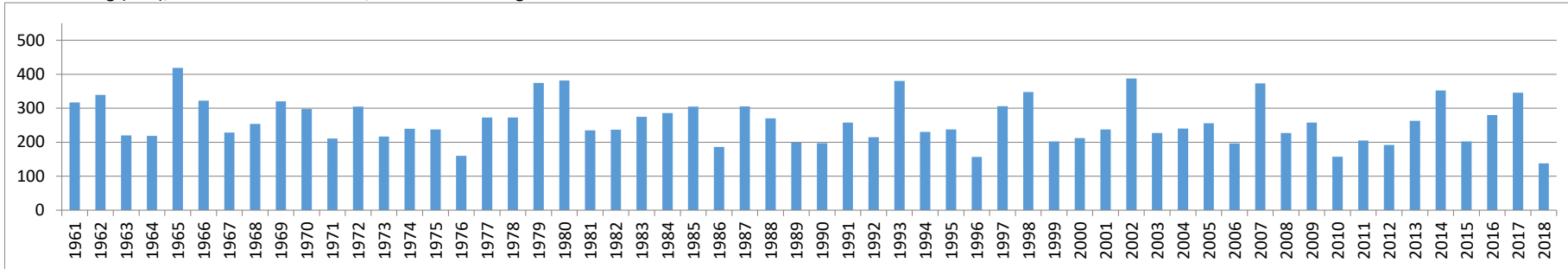
Niederschlag (mm), Zeitraum: 01.04.-31.07., Station Bremerhaven



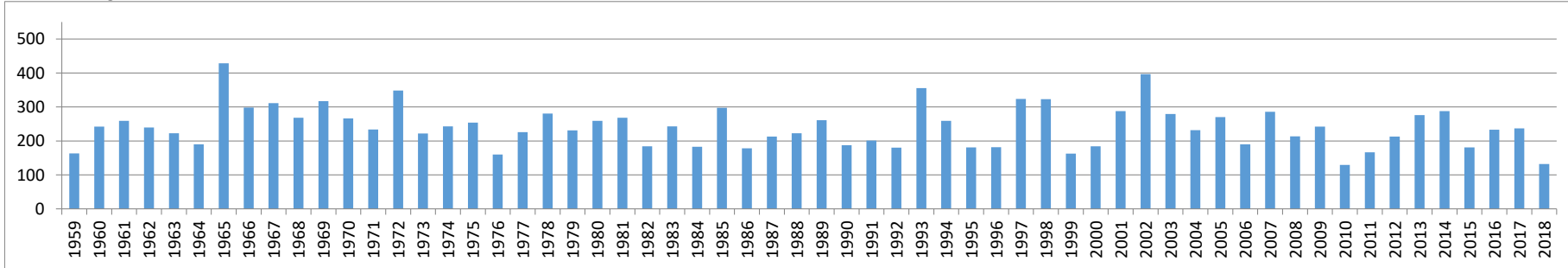
Niederschlag (mm), Zeitraum: 01.04.-31.07., Station Bremervörde



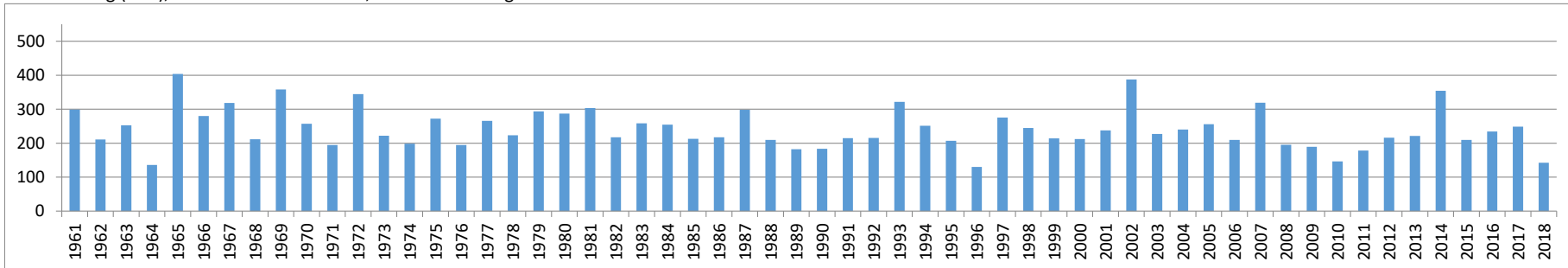
Niederschlag (mm), Zeitraum: 01.04.-31.07., Station Rotenburg



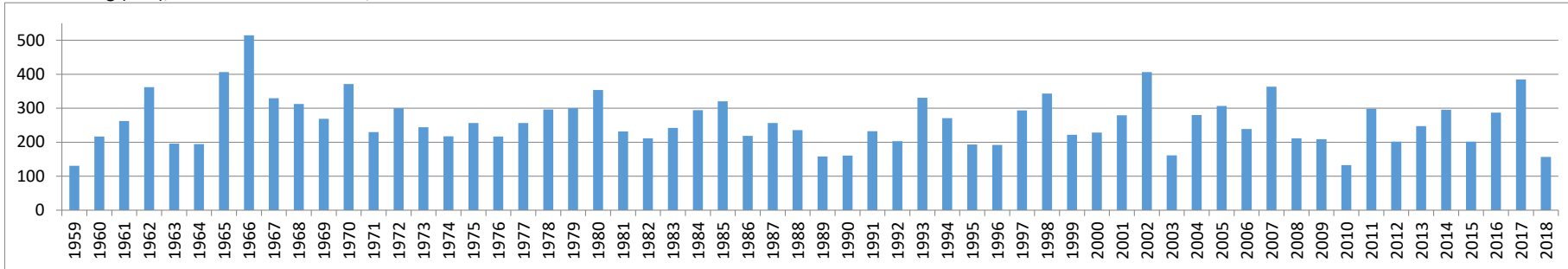
Niederschlag (mm), Zeitraum: 01.04.-31.07., Station Bremen



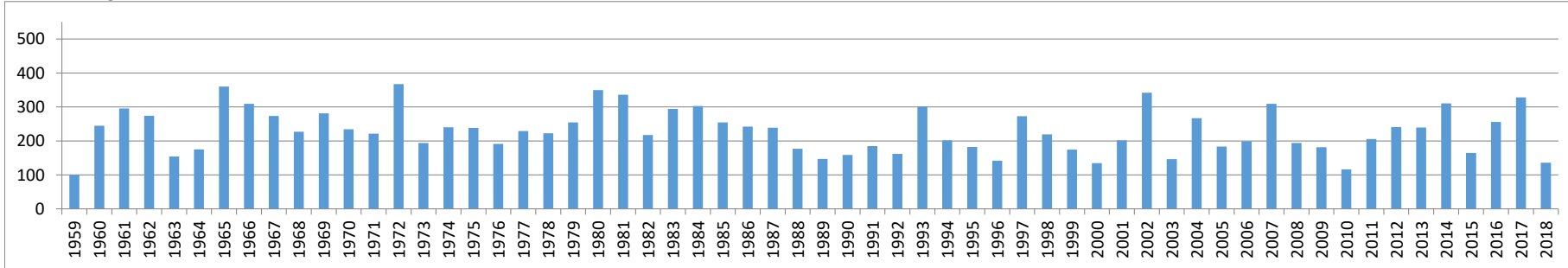
Niederschlag (mm), Zeitraum: 01.04.-31.07., Station Nienburg



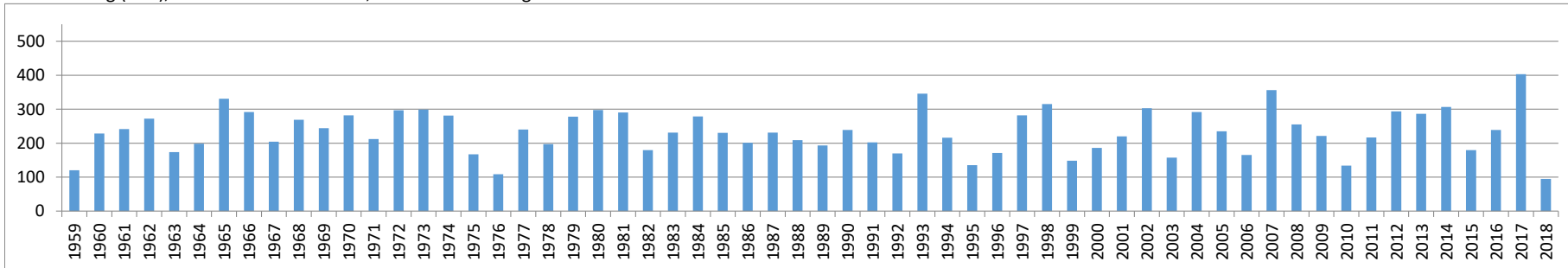
Niederschlag (mm), Zeitraum: 01.04.-31.07., Station Soltau



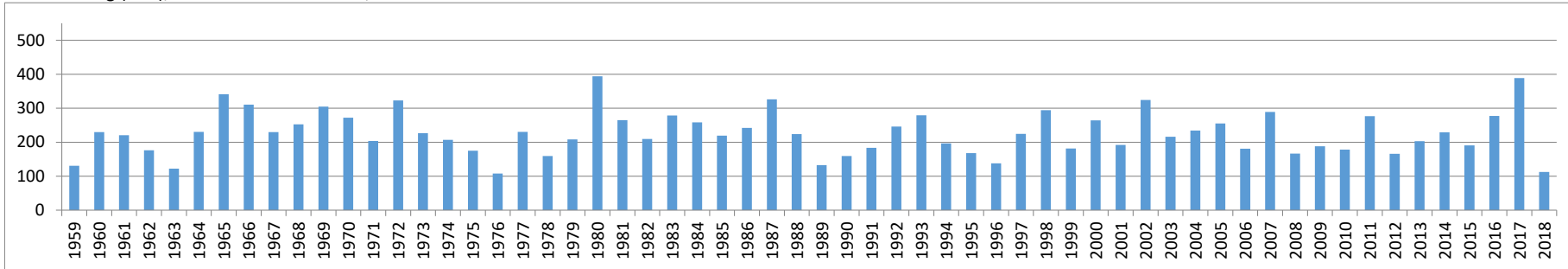
Niederschlag (mm), Zeitraum: 01.04.-31.07., Station Hannover



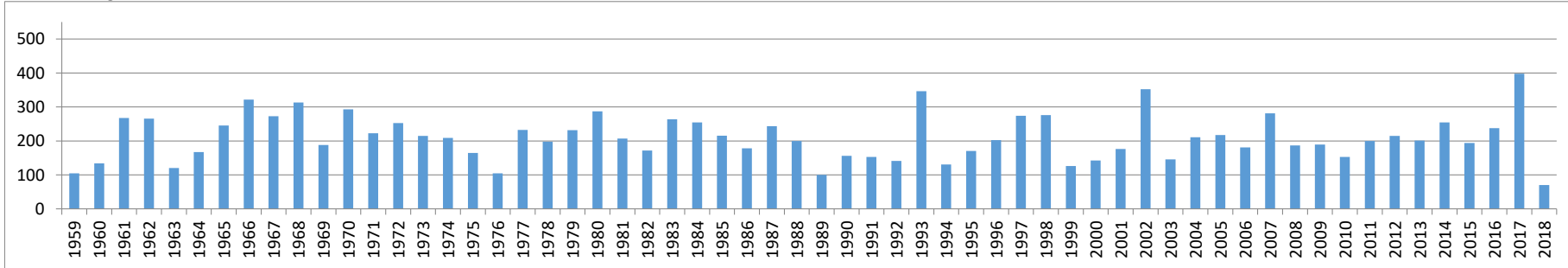
Niederschlag (mm), Zeitraum: 01.04.-31.07., Station Boizenburg



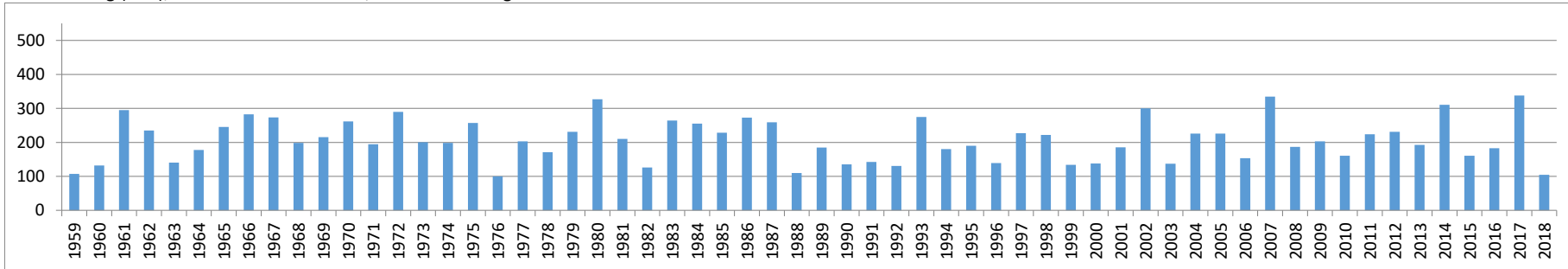
Niederschlag (mm), Zeitraum: 01.04.-31.07., Station Schwerin



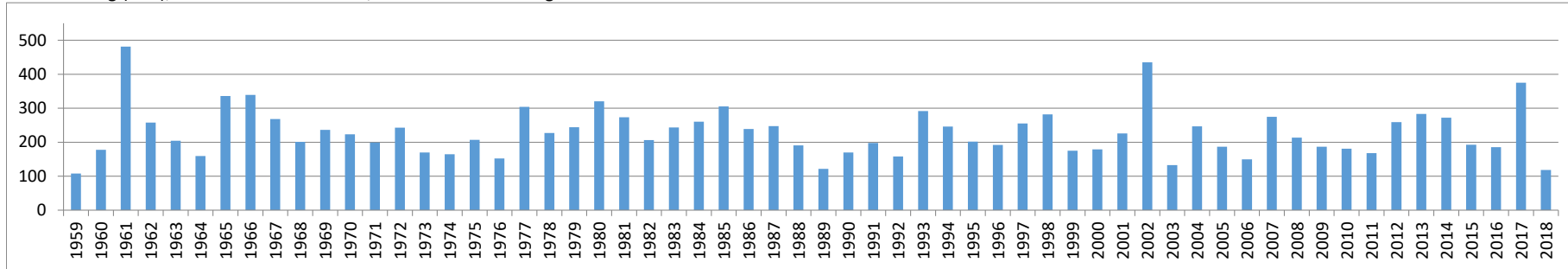
Niederschlag (mm), Zeitraum: 01.04.-31.07., Station Lüchow



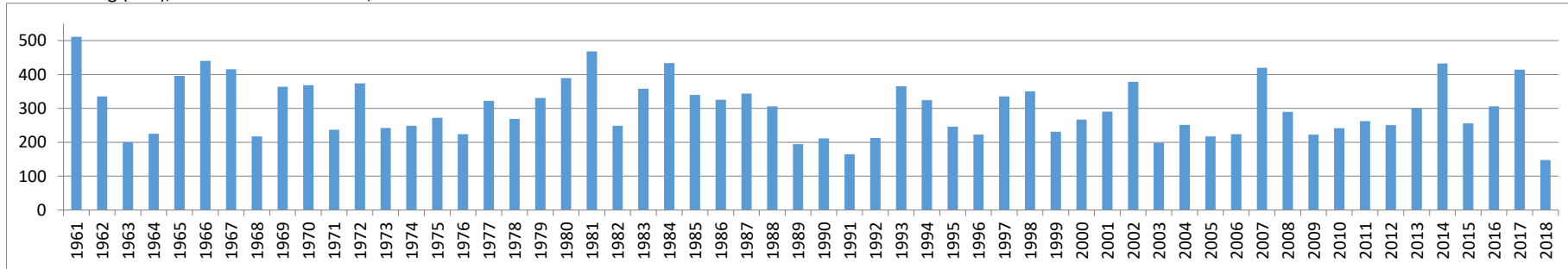
Niederschlag (mm), Zeitraum: 01.04.-31.07., Station Gardelegen



Niederschlag (mm), Zeitraum: 01.04.-31.07., Station Braunschweig



Niederschlag (mm), Zeitraum: 01.04.-31.07., Station Seesen



Niederschlag (mm), Zeitraum: 01.04.-31.07., Station Göttingen

